

August 17, 1995  
DT

Introduced By: BRIAN DERDOWSKI  
GREG NICKELS

Proposed No.: 95-692

ORDINANCE NO. **12088**

AN ORDINANCE authorizing a trail corridor modification for the King County East Lake Sammamish to Klahanie Trail and Klahanie to Redmond Watershed Trail 1989 Open Space Bond projects.

BE IT ORDAINED BY THE COUNCIL OF KING COUNTY:

PREAMBLE:

1. The King County Lake Sammamish to Klahanie Trail and Klahanie to Redmond Watershed Trail (Trails) are identified in the East Sammamish Community Plan, adopted by Ordinance 10847; the Bear Creek Community Plan, adopted by Motion 8846; the King County Open Space Plan, adopted by Motion 8657; the King County Regional Trails Plan, adopted by Motion 8817; and the Non-Motorized Transportation Plan element of the Transportation Plan adopted by Ordinance 10812.
2. In 1989, the King County Council adopted Ordinance 9071 authorizing the 1989 Open Space Bond proposition which, upon approval by over 60% of the electorate, authorized the expenditure of funds to purchase real property necessary for the Trails. In November 1989, over 67% of King County voters approved the Open Space Bond Proposition.
3. At the request of the King County Council, King County suspended acquisition negotiations pending completion of a public process to identify trail corridor alternatives. The King County Open Space Citizens Oversight Committee undertook a two year public process, with extensive community involvement, and recommended an alternative corridor for the Trails.
4. The Department of Development and Environmental Services has reviewed a SEPA Environmental Checklist prepared by the Office of Open Space on the proposed action to modify the trail corridor to that recommended by the COC and the Department has issued a Determination of Non-Significance.

1            SECTION 2. There is hereby approved and adopted a trail corridor  
 2 modification for the King County East Lake Sammamish to Klahanie and  
 3 Klahanie to Redmond Watershed Trail 1989 Open Space Bond projects, as  
 4 identified in Attachment "A".

5  
 6            INTRODUCED AND READ for this first time this 16<sup>th</sup> day of October  
 7 1995.

8            PASSED by a vote of 12 to 0 this 19<sup>th</sup> day of December 1995.

9            KING COUNTY COUNCIL  
 10            KING COUNTY, WASHINGTON

11  
 12  
 13  
 14            Kent Pullen  
 15            Chair

16 ATTEST:

17  
 18  
 19            Gerald A. Peterson  
 20            Clerk of the Council

21  
 22            APPROVED this 28<sup>th</sup> day of December 1995.

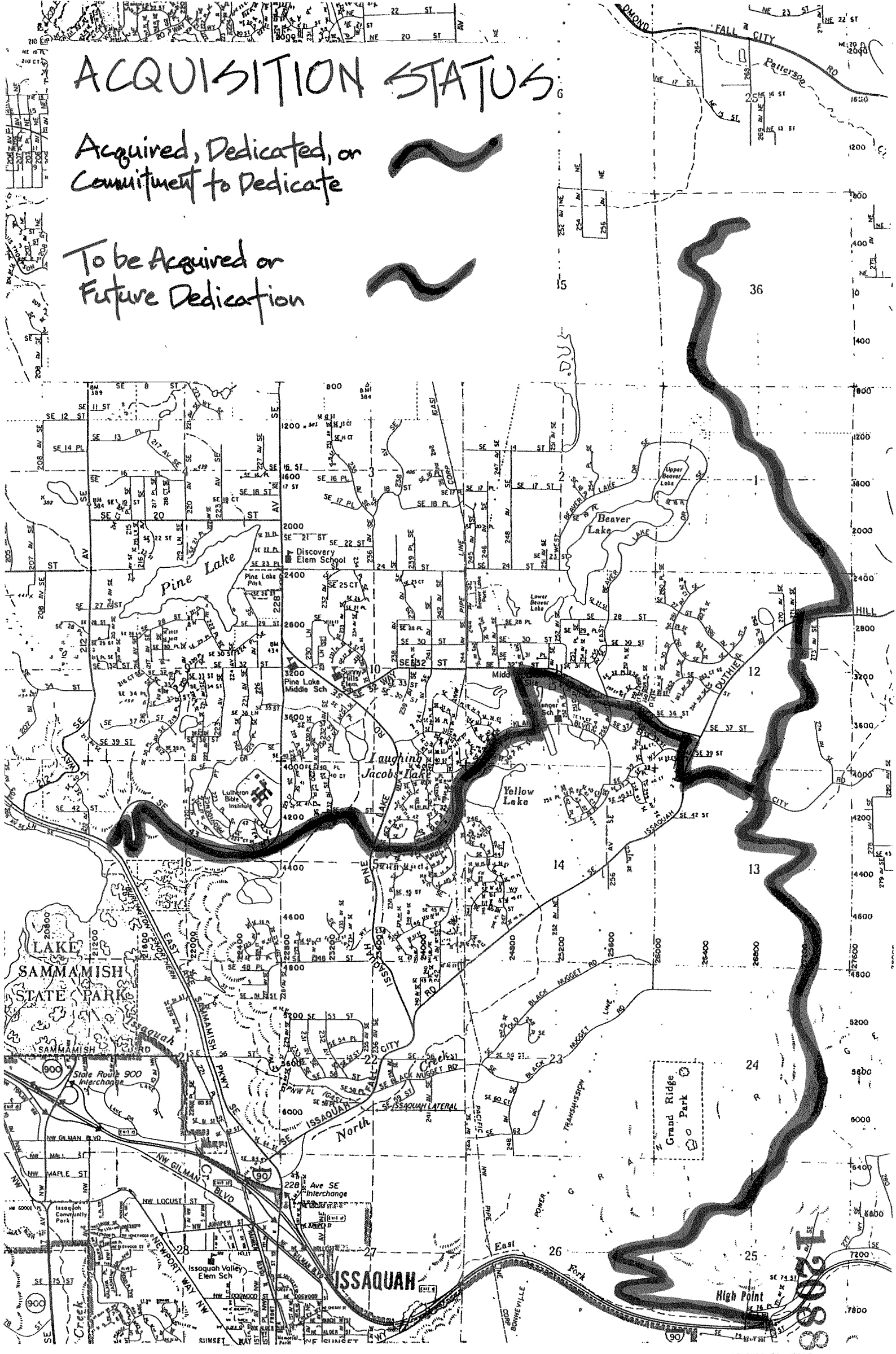
23  
 24  
 25  
 26            Ivy Locher  
 27            King County Executive

28  
 29  
 30 Attachment

# ACQUISITION STATUS

Acquired, Dedicated, or  
Commitment to Dedicate

To be Acquired or  
Future Dedication

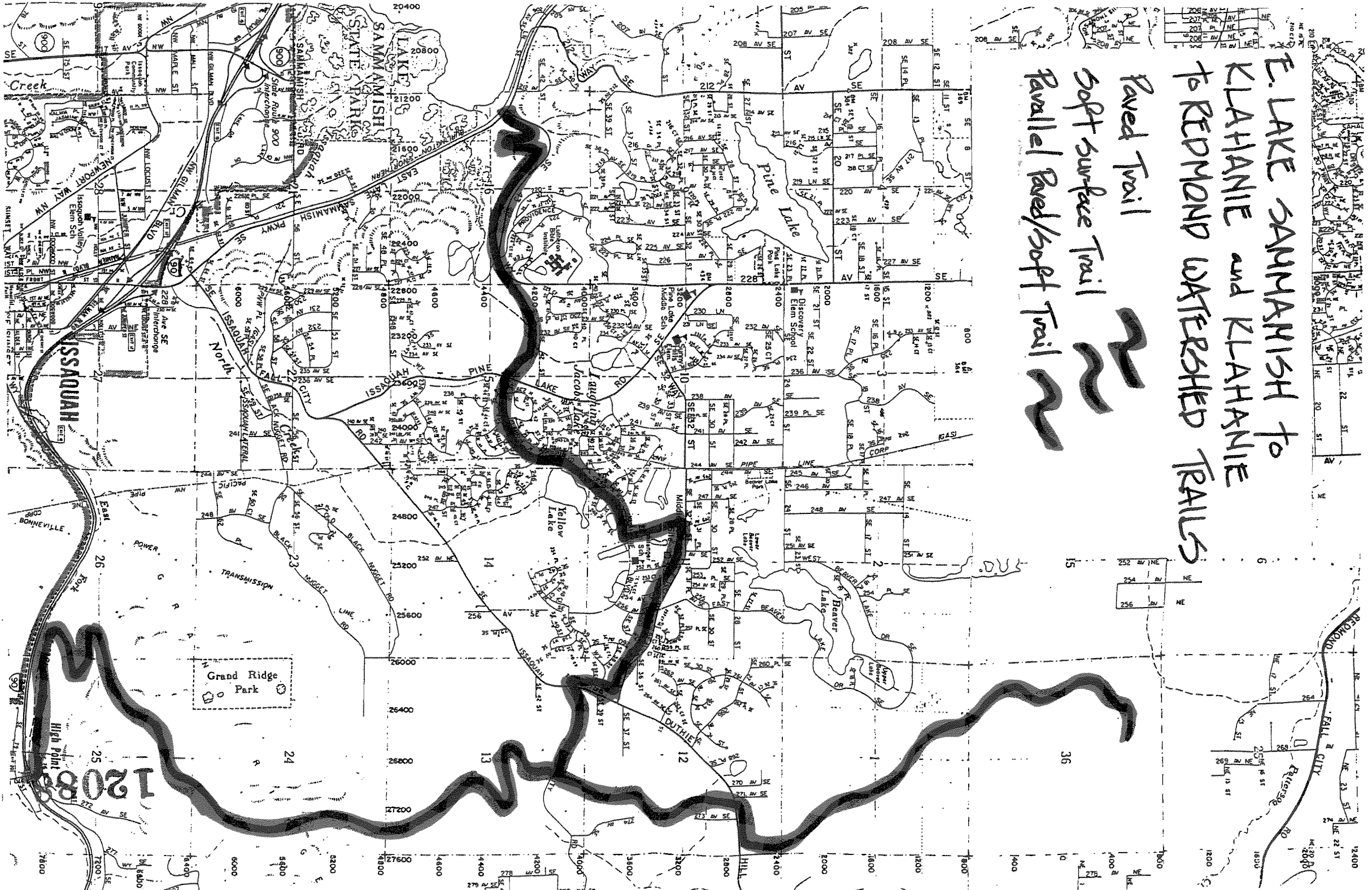
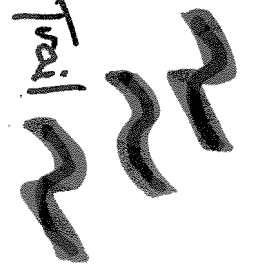


E. LAKE SAMMAMISH to  
KLATHANIE and KLATHANIE  
to REDMOND WATERSHED TRAILS

Paved Trail

Soft surface Trail

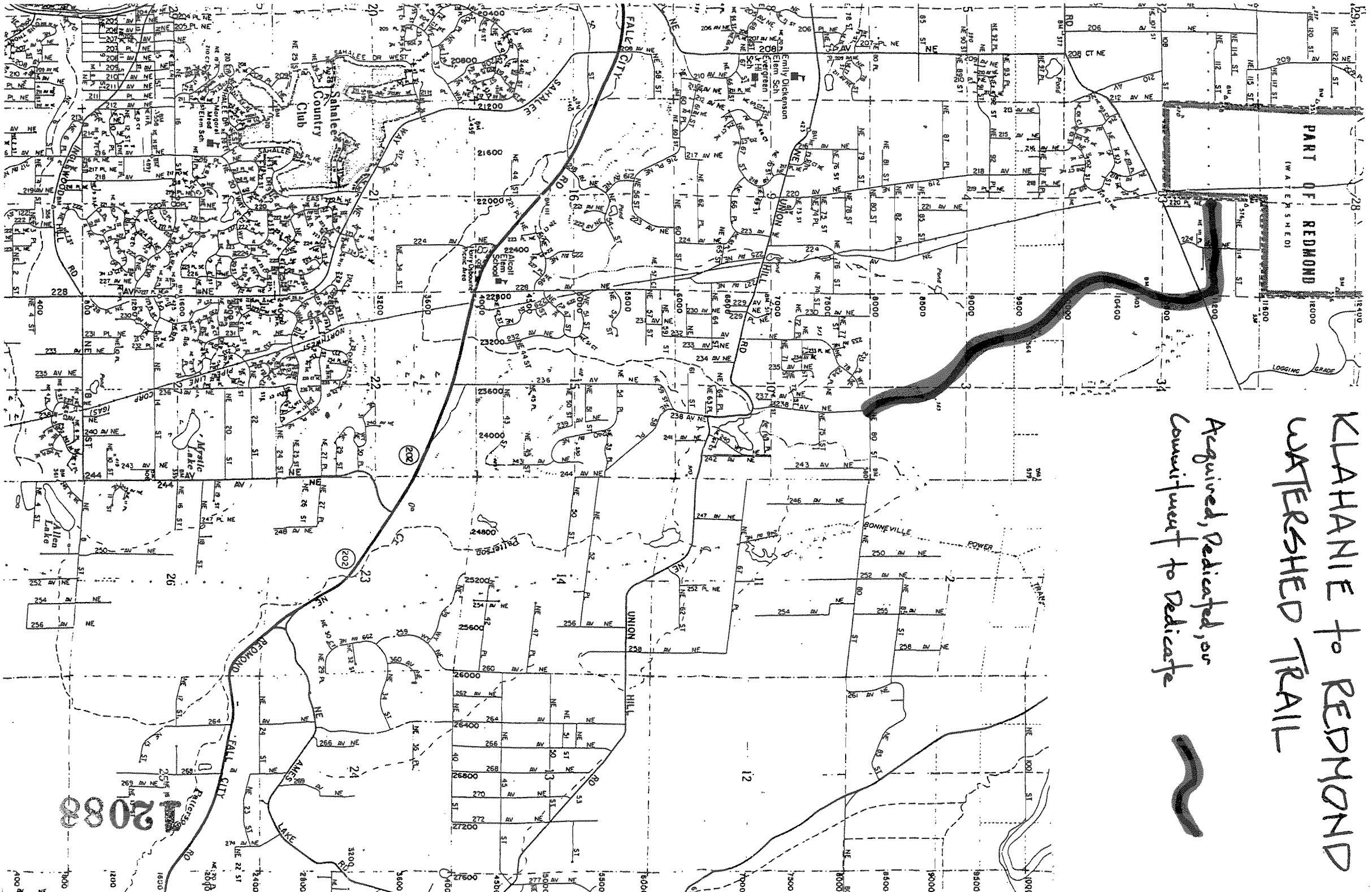
Parallel Paved/Soft Trail



SRPA CHECKLIST

ATTACHMENT A-1

OCTOBER 20, 1993



KLAHANIE to REDMOND  
 WATERSHED TRAIL  
 Acquired, Redicated, or  
 Conveyed to Redicate



12088